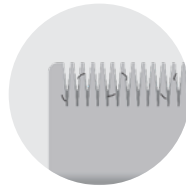


BARBER TOOL CARE

Cleaning your Wahl clippers blades

WAHL®

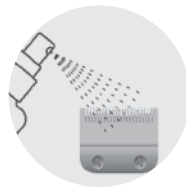
EVERYDAY CLEANING



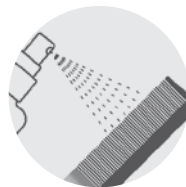
Your tools should be cleaned and sanitized after every client to prevent the spread of infectious skin diseases.



Start by brushing off excess hair on your blades.



Spray your clipper/trimmer blades with Wahl Clini-Clip, and allow to sit before wiping off any excess with a clean towel.



Ensure you also spray your combs, brushes and attachment combs with Clini-Clip as well.



Make sure you oil your blades immediately after using Clini-Clip with Wahl Blade Oil.

BARBER TOOL CARE

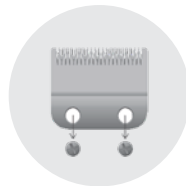
Cleaning your Wahl clippers blades

WAHL®

ONCE A MONTH CLEANING



Your Clipper blades should be removed periodically (at least once a month) to allow the cut hair to be cleaned out from under the blades.



Simply use a screwdriver to undo the blade screws and then remove the blades. Remove the sponge and clean it plus any hair that is caught in the clipper. Reverse the process to re-attach the blades.

All Wahl Clippers are tested before they leave our factory. Often testing materials or grinding compound may be found on the blades. This is easily cleaned off using the enclosed blade cleaning brush.

BARBER TOOL CARE

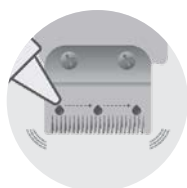
Oiling your Wahl clippers blades

WAHL®

HOW TO OIL YOUR BLADES



With the blade directed downwards, turn the clipper/trimmer on.



Apply three drops of oil – one on each side and one in the middle.



With the clipper/trimmer still on, move the taper lever back and forth to work oil into blade.



Turn off clipper/trimmer and blot excess oil with clean towel.

Always use Wahl Clipper Oil on your Wahl tools as it is specifically designed to extend the life of your blades.

BARBER TOOL CARE

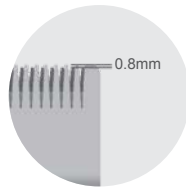
Aligning your Wahl clippers blades

WAHL®

HOW TO ALIGN YOUR BLADES



If your clipper has a taper lever, move the taper lever upwards towards the lid of the clipper so the blades are in the closed position i.e. closest cutting length.



The top & bottom blades should be parallel with the top blade approximately 0.8mm behind the bottom blade (do not have the top blade level with the bottom blade as this can cause skin pinching or cutting). See Diagram Below.



The extreme left hand tooth on the top blade should be positioned so it is over the gap between the two left hand teeth of the lower blade. i.e. the extreme left gap on the lower blade. See Diagram Below.



Slowly tighten each screw ensuring you do not alter the alignment in the process. The best way is to tighten each screw a little at a time swapping from one to the other.



Check your alignment setting with the blades tightened and the lever in the closed position to ensure you do not cause pinching or cutting of the skin.